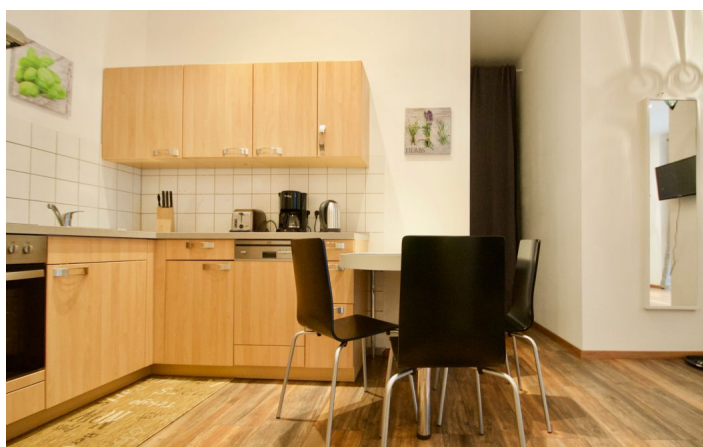
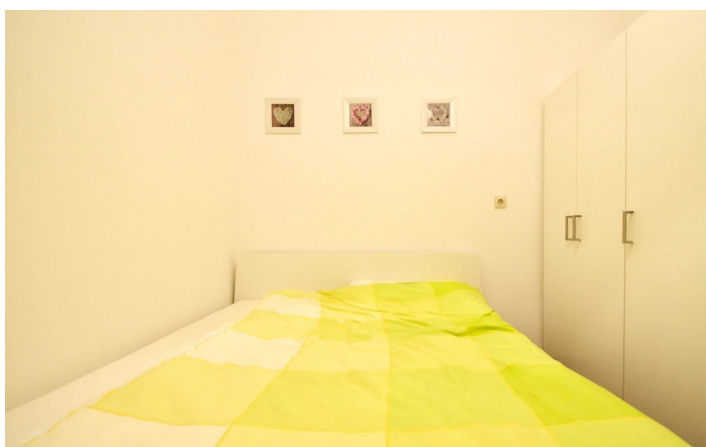
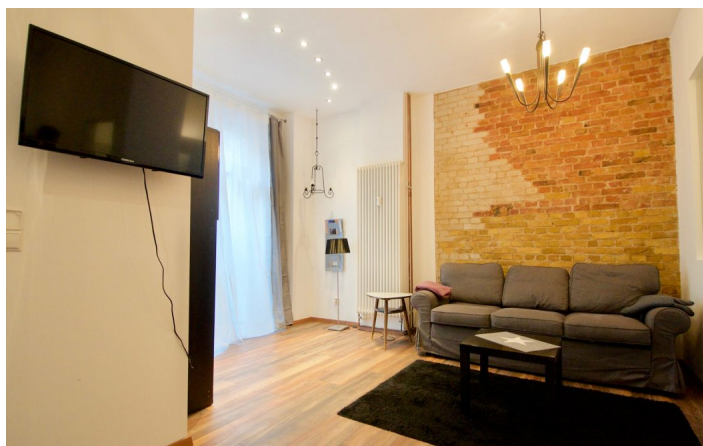




**HOME TO HOME**  
**WOHNEN AUF ZEIT**

Geschäftsführerin und Inhaberin: Eva-Jannetie Gerlach  
Motzstraße 58, 10777 Berlin, Deutschland  
+49 30 2191 2323, office@hometohome.de, hometohome.de  
Deutsche Bank, IBAN: DE11 1007 0024 0562 0901 00, BIC: DEUTDE33HAN  
USt-Id.Nr.: DE 230089808

## NICE 2-ROOM APARTMENT IN LIVELY PRENZLAUER BERG DISTRICT





---

## ID 5681

---

Location: see map (approximate location)

---

NUMBER OF ROOMS: 2 (Schlafzimmer: 1, Wohnzimmer: 1)

---

MAXIMUM BEDS: 2

---

BATHROOMS: 1 (1x mit Dusche)

---

PUBLIC TRANSPORT: Bus, S41, S42, S8, S85, S9, Tram

---

OCCUPATION: min. 3 Monate

---

DEPOSIT: 2 Monatsmieten

---

ADDITIONAL COSTS: Endreinigung

---

## LOCATION

The apartment is centrally located between the green Helmholtzplatz and the Humannplatz, which is perfect for taking a walk and stress relief. The lively district offers numerous shopping facilities, restaurants and cafés in the immediate neighborhood. A cinema, the Kulturbrauerei and the Zeiss-Planetarium are only a few minutes away. Very good traffic connection due to vicinity to train and bus stops. Discover a dream district!

## DETAILS

bed linen and towels, modern-en, no pets, non-smoking, parquet, simple furnishing style, TV

## INTERIOR

front building

---

PRENZLAUER BERG

2 R

Currently not available

910€ / M

---