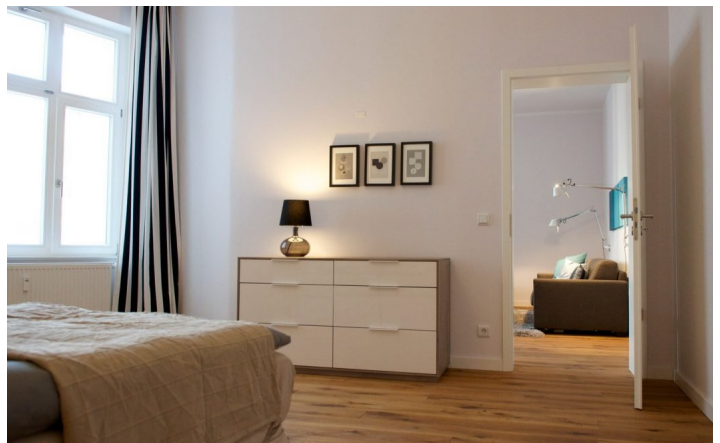
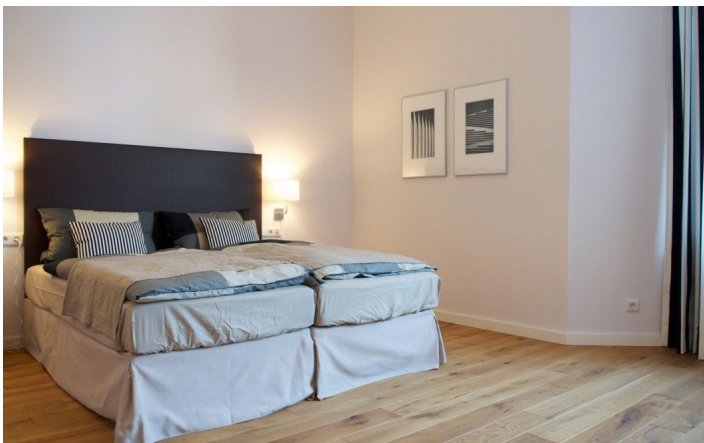




HOME TO HOME
WOHNEN AUF ZEIT

Geschäftsführerin und Inhaberin: Eva-Jannetie Gerlach
Motzstraße 58, 10777 Berlin, Deutschland
+49 30 2191 2323, office@hometohome.de, hometohome.de
Deutsche Bank, IBAN: DE11 1007 0024 0562 0901 00, BIC: DEUTDE33HAN
USt-Id.Nr.: DE 230089808

ADORABLE APARTMENT WITH BALCONY CLOSE TO KULTURBRAUEREI





ID 5234

SIZE: ca. 90 SQM

Location: see map (approximate location)

NUMBER OF ROOMS: 2 (Schlafzimmer: 1, Wohnzimmer: 1)

MAXIMUM BEDS: 4 (Doppelbett 180x200, Schlafcouch)

BATHROOMS: 1 (1x mit Dusche, 1 Gäste-WC)

PUBLIC TRANSPORT: Tram, U2

OCCUPATION: min. 3 months

DEPOSIT: 2 monthly rents

ADDITIONAL COSTS: Endreinigung

LOCATION

The spacious apartment is located directly in the trendy neighborhood in Prenzlauer Berg with many bars, restaurants and shops. Shopping for everyday use and also exceptional shops in the immediate vicinity. The Danziger road with further entertainment is within walking distance. Good connection to public transport through U Eberswalder Straße and the tram. The pretty apartment is spacious and wonderfully bright through the high ceilings. An eye-catcher are the balcony and a dressing room. Furnishing Inspired by HHH • This apartment has been lovingly and modern furnished and furnished by HOME TO HOME.

DETAILS

bed linen and towels, bright, ceramic hob, coffee maker, combined washer & dryer, comfortable, dishwasher, electric kettle, fitted kitchen, flagstones, freezer, generous, internet, modern-en, no pets, non-smoking, representative, sophisticated, toaster, Wi-Fi, wooden flooring

INTERIOR

3rd floor, central heating, energy certificate available, old building, wing

PRENZLAUER BERG

ca. 90 SQM

2 R

free from 1.8.2023

2.100€ / M
