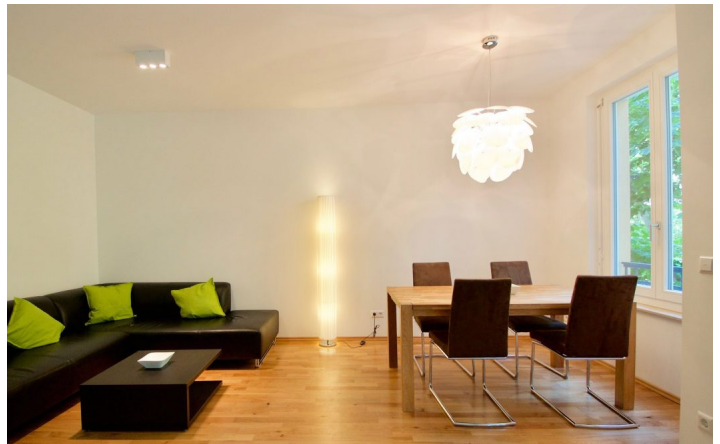




HOME TO HOME
WOHNEN AUF ZEIT

Geschäftsführerin und Inhaberin: Eva-Jannetie Gerlach
Motzstraße 58, 10777 Berlin, Deutschland
+49 30 2191 2323, office@hometohome.de, hometohome.de
Deutsche Bank, IBAN: DE11 1007 0024 0562 0901 00, BIC: DEUTDE33HAN
USt-Id.Nr.: DE 230089808

SUNNY APARTMENT WITH BIG BALCONY AT KURFÜRSTENDAMM





ID 5505

SIZE: ca. 83 SQM

Location: see map (approximate location)

NUMBER OF ROOMS: 3 (bedrooms: 1, living rooms: 1, Arbeits-/Gästezimmer: 1)

MAXIMUM BEDS: 4 (double bed 180x200)

BATHROOMS: 2 (1x with shower, 1x with bathtub and shower)

PUBLIC TRANSPORT: bus, U7

OCCUPATION: min. 3 months

DEPOSIT: 2 monthly rents

ADDITIONAL COSTS: cleaning all 14 days, final cleaning

LOCATION

Beautiful, quiet residential area directly at Kurfürstendamm just a few meters away from Adenauerplatz. In the neighborhood there are numerous shopping facilities for the daily needs as well as nice and varied restaurants and cafés. The Kurfürstendamm is a 3 km shopping street with many shops and cultural offers. Very good connection to public transports due to U-Bahn and several bus lines.

DETAILS

bed linen and towels, BlueRay player, cable connection, ceramic hob, combined washer & dryer, cosy atmosphere to live in, digitalreceiver, dishwasher, fitted kitchen, flatscreen 3D TV, microwave, Nespresso machine, no pets, non-smoking, parquet , sunny, toaster, well maintained, Wi-Fi

INTERIOR

new building, underfloor heating

WILMERSDORF

ca. 83 SQM

3 R

Currently not available

2.380€ / M
