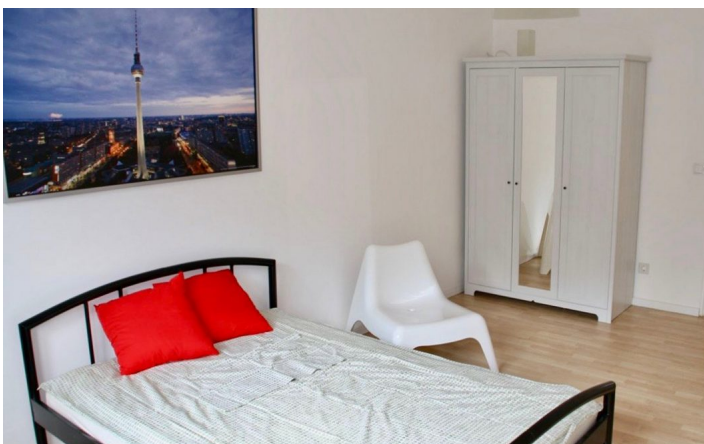




HOME TO HOME
WOHNEN AUF ZEIT

Geschäftsführerin und Inhaberin: Eva-Jannetie Gerlach
Motzstraße 58, 10777 Berlin, Deutschland
+49 30 2191 2323, office@hometohome.de, hometohome.de
Deutsche Bank, IBAN: DE11 1007 0024 0562 0901 00, BIC: DEUTDE33HAN
USt-Id.Nr.: DE 230089808

APARTMENT WITH A BIG BALCONY IN MITTE





ID 5140

SIZE: ca. 78 SQM

Location: see map (approximate location)

NUMBER OF ROOMS: 3 (bedrooms: 2, living rooms: 1)

MAXIMUM BEDS: 6 (double bed, sofa bed)

BATHROOMS: 1 (1x with bathtub)

PUBLIC TRANSPORT: S5, S7, S75, U8

OCCUPATION: free from immediatly, min. 3 months, max. unlimited

DEPOSIT: 2 monthly rents

ADDITIONAL COSTS: final cleaning

LOCATION

The apartment is located in a quiet street in the middle of Berlin. Very close to the Alexanderplatz where you can find many shops and restaurants. U+S-Bahnstation Jannowitzbrücke is reachable in a few minutes and offers good access to public transport.

DETAILS

bed linen and towels, cable connection, ceramic hob, coffee maker, dvd player, electric kettle, fitted kitchen, flatscreen TV, laminate, modern-en, no pets, non-smoking, radio, telephone, washing machine, Wi-Fi

INTERIOR

central heating, energy certificate available, front building, old building 50s/60s

MITTE

ca. 78 SQM

3 R

Currently not available

2.250€ / M
