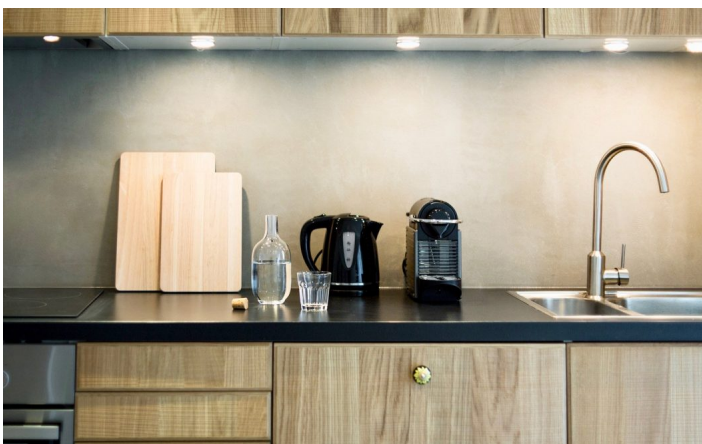
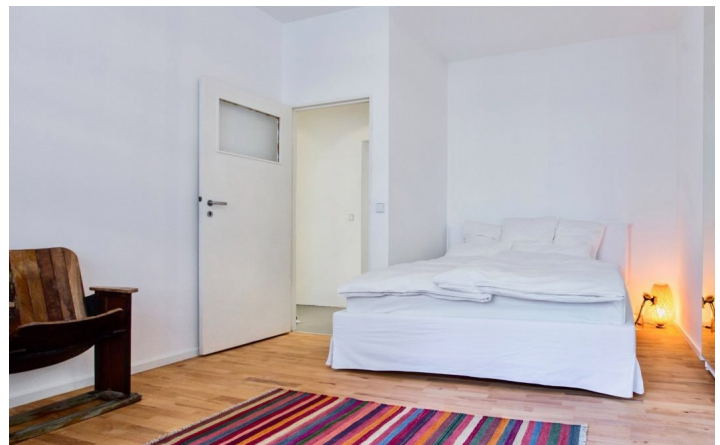




HOME TO HOME
WOHNEN AUF ZEIT

Geschäftsführerin und Inhaberin: Eva-Jannetie Gerlach
Motzstraße 58, 10777 Berlin, Deutschland
+49 30 2191 2323, office@hometohome.de, hometohome.de
Deutsche Bank, IBAN: DE11 1007 0024 0562 0901 00, BIC: DEUTDE33HAN
USt-Id.Nr.: DE 230089808

BEAUTIFUL APARTMENT AT SAVIGNYPLATZ WITH BALCONY





ID 5642

SIZE: ca. 77 SQM

Location: see map (approximate location)

NUMBER OF ROOMS: 2 (Schlafzimmer: 1, Wohnzimmer: 1)

MAXIMUM BEDS: 3 (Doppelbett 180x200)

BATHROOMS: 1 (1x mit Dusche)

PUBLIC TRANSPORT: bus, S46, S5, S7, S75

OCCUPATION: min. 3 months

DEPOSIT: 2 monthly rents

ADDITIONAL COSTS: Endreinigung

LOCATION

The apartment is very centrally located directly at the popular Savignyplatz. In the area there are numerous cafes and restaurants. Even small boutiques are within walking distance. With the S-Bahn you can reach the Hauptbahnhof and the Friedrichstrasse. The Kurfürstendamm, known for its shopping variety, can be reached in a few minutes by foot.

DETAILS

bed linen and towels, ceramic hob, cosy atmosphere to live in, digital music system for Apple-products, electric kettle, fitted kitchen, generous, modern-en, Nespresso machine, no pets, non-smoking, parquet, toaster, washing machine, well maintained, Wi-Fi

INTERIOR

central gas heating, front building, redeveloped building

CHARLOTTENBURG

ca. 77 SQM

2 R

free from 1.4.2025

1.865€ / M
