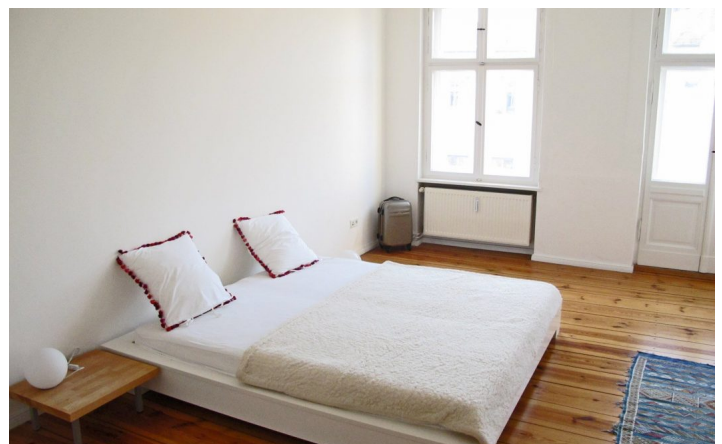


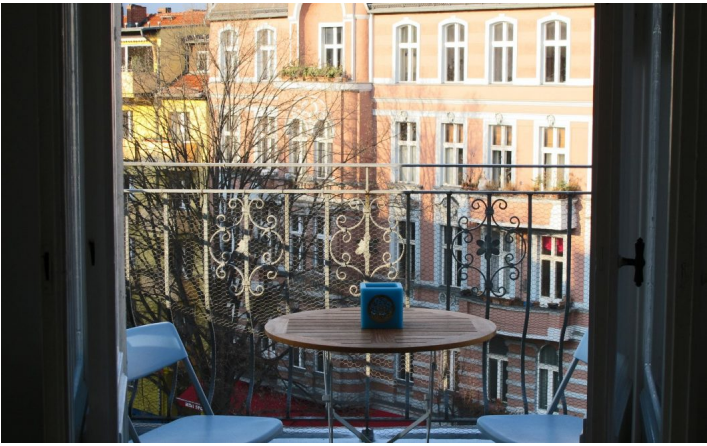


**HOME TO HOME**  
**WOHNEN AUF ZEIT**

Geschäftsführerin und Inhaberin: Eva-Jannetie Gerlach  
Motzstraße 58, 10777 Berlin, Deutschland  
+49 30 2191 2323, office@hometohome.de, hometohome.de  
Deutsche Bank, IBAN: DE11 1007 0024 0562 0901 00, BIC: DEUTDE33HAN  
USt-Id.Nr.: DE 230089808

## BRIGHT APARTMENT NEAR TO LANDWEHRKANAL





---

## ID 5267

---

SIZE: ca. 110 SQM

---

Location: see map (approximate location)

---

NUMBER OF ROOMS: 3 (bedrooms: 1, living rooms: 1)

---

MAXIMUM BEDS: 3 (double bed, sofa bed 90x200)

---

BATHROOMS: 1 (1x with shower)

---

PUBLIC TRANSPORT: bus

---

OCCUPATION: min. 3 months

---

DEPOSIT: 2 monthly rents

---

ADDITIONAL COSTS: final cleaning

---

## LOCATION

The apartment is located between Paul-Lincke Ufer and the Görlitzer Park in Kreuzberg. The Görlitzer Park invites you to go for a walk and to do some sport. Good connection to public transports: the U-Bahn stations Görlitzer Park and Schönleinstrasse are within walking distance. Shopping facilities, restaurants and cafés are as well in the surrounding streets.

## DETAILS

bed linen and towels, cable connection, ceramic hob, chastely, clothes dryer, coffee maker, cosy atmosphere to live in, dishwasher, dvd player, electric kettle, microwave, no pets, non-smoking, old building character, open kitchen, stucco, sunny, toaster, TV, washing machine, well maintained, Wi-Fi, wooden flooring

## INTERIOR

central heating, energy certificate available, front building

---

## KREUZBERG

ca. 110 SQM

3 R

Currently not available

2.250€ / M

---