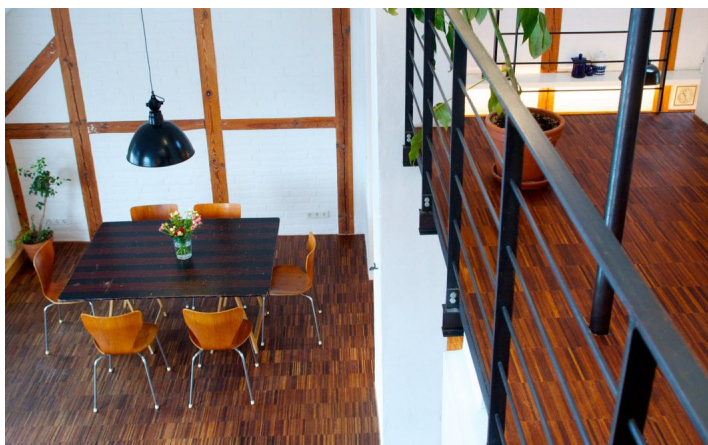
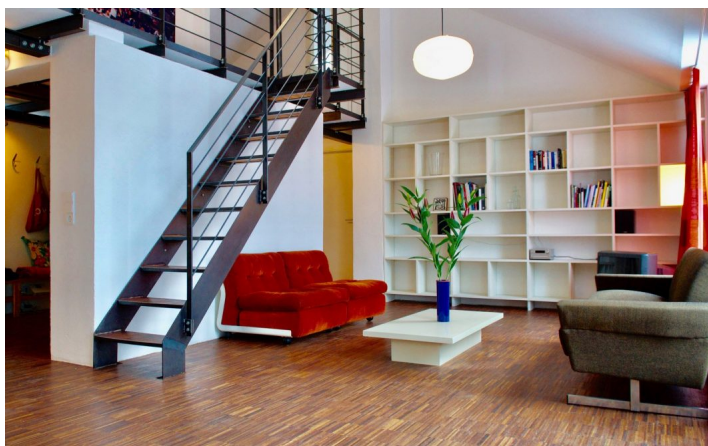




HOME TO HOME
WOHNEN AUF ZEIT

Geschäftsführerin und Inhaberin: Eva-Jannetie Gerlach
Motzstraße 58, 10777 Berlin, Deutschland
+49 30 2191 2323, office@hometohome.de, hometohome.de
Deutsche Bank, IBAN: DE11 1007 0024 0562 0901 00, BIC: DEUTDE33HAN
USt-Id.Nr.: DE 230089808

BRIGHT ATTIC MAISONNETTE-FLAT WITH A FANTASTIC VIEW OVER BERLIN





ID 5209

SIZE: ca. 120 SQM

Location: see map (approximate location)

NUMBER OF ROOMS: 5 (bedrooms: 3, living rooms: 1, workrooms: 1)

MAXIMUM BEDS: 5 (single bed 90x200, bed 120x200, double bed 180x200)

BATHROOMS: 1 (1x with bathtub)

PUBLIC TRANSPORT: Tram, U2

OCCUPATION: min. 3 months

DEPOSIT: 2 monthly rents

ADDITIONAL COSTS: final cleaning

LOCATION

The apartment is located between the Mauerpark, which invites to relax and walks, and the Kastanienallee. The underground station Eberswalder Straße can be reached in a few minutes. From there, the U2 takes only 5 minutes to Alexanderplatz. In the vicinity of the apartment are the Kulturbrauerei, the Stadtbad Oderberger Straße, countless restaurants and shops

The beautiful attic apartment in the renovated old building is modern, but lovingly furnished. The maisonette style makes it spacious and is bright. Through the 5th floor you have a fantastic view over Berlin.

Convince yourself and experience Berlin from its most beautiful side!

DETAILS

bed linen and towels, cable connection, cared, coffee maker, cosy atmosphere to live in, eat in kitchen, electric kettle, loft character, modern-en, no pets, non-smoking, parquet, sunny, telephone, telephone flatrate (for German domestic conversations), TV, washing machine, Wi-Fi

INTERIOR

central heating, front building, redeveloped building

PRENZLAUER BERG

ca. 120 SQM

5 R

free from 1.10.2022

2.640€ / M
