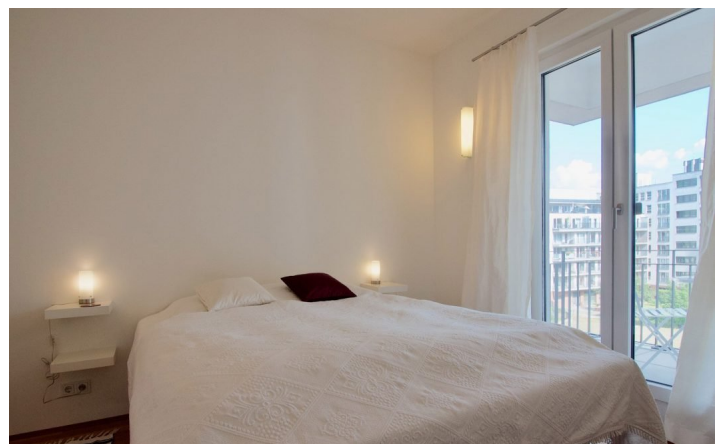
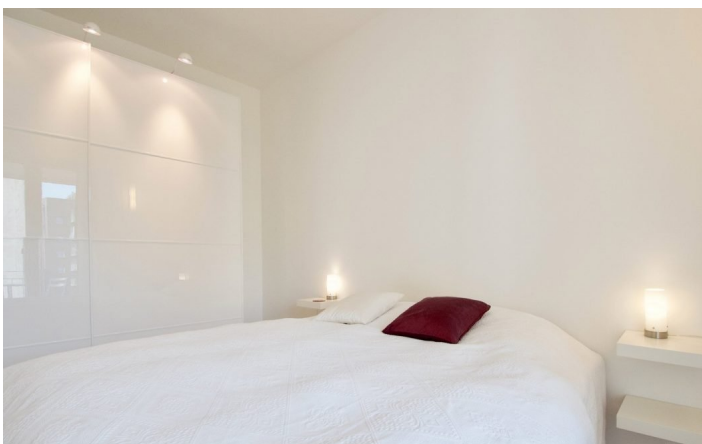




HOME TO HOME
WOHNEN AUF ZEIT

Geschäftsführerin und Inhaberin: Eva-Jannetie Gerlach
Motzstraße 58, 10777 Berlin, Deutschland
+49 30 2191 2323, office@hometohome.de, hometohome.de
Deutsche Bank, IBAN: DE11 1007 0024 0562 0901 00, BIC: DEUTDE33HAN
USt-Id.Nr.: DE 230089808

CHARMING APARTMENT AT FISCHERINSEL WITH BALCONY





ID 5070

SIZE: ca. 57 SQM

Location: see map (approximate location)

NUMBER OF ROOMS: 2 (Schlafzimmer: 1, Wohnzimmer: 1)

MAXIMUM BEDS: 4 (Schlafcouch, Doppelbett)

BATHROOMS: 1 (1x mit Dusche)

PUBLIC TRANSPORT: bus, U2

OCCUPATION: min. 3 months

DEPOSIT: 2 monthly rents

ADDITIONAL COSTS: Endreinigung

LOCATION

The cozy 2-room apartment is located in a quiet side street between the subway stations Spittelmarkt and Märkisches Museum. The Spree and the Fischerinsel are only a few minutes walk away and invite you to go for a walk. The U2 at Spittelmarkt underground station offers excellent transport links. In the parallel located Alte Jakobstraße shops for daily needs. The Mitte district offers numerous restaurants and small cafes.

The apartment is lovingly and modernly furnished and has a great view of the neighborhood, as it is on the 3rd floor. Even on the balcony, you can enjoy balmy summer nights and recover from the stresses of everyday life.

Experience one of the most exciting districts of Berlin up close!

DETAILS

art objects, bed linen and towels, cable connection, clothes dryer, cosy atmosphere to live in, digital music system for Apple-products, digital receiver, dishwasher, electric kettle, flatscreen TV, generous, induction cooker, modern-en, no pets, non-smoking, open kitchen, parquet, representative, simple furnishing style, sunny, toaster, TV, washing machine, well maintained, Wi-Fi

INTERIOR

3rd floor, balcony, central heating, front building, new building, underfloor heating

MITTE

ca. 57 SQM

2 R

free from 1.5.2025

