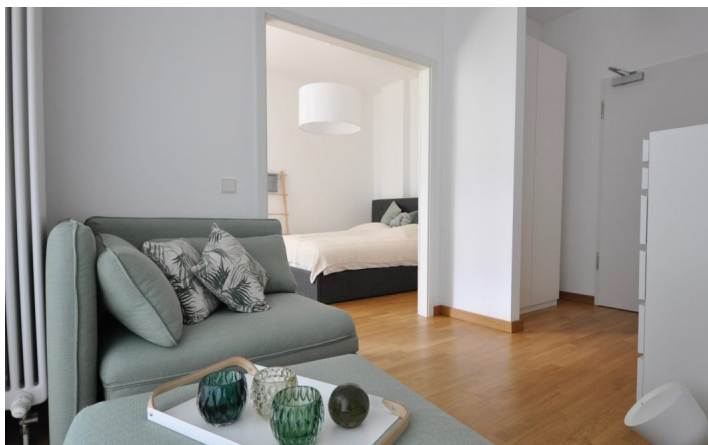




HOME TO HOME
WOHNEN AUF ZEIT

Geschäftsführerin und Inhaberin: Eva-Jannetie Gerlach
Motzstraße 58, 10777 Berlin, Deutschland
+49 30 2191 2323, office@hometohome.de, hometohome.de
Deutsche Bank, IBAN: DE11 1007 0024 0562 0901 00, BIC: DEUTDE33HAN
USt-Id.Nr.: DE 230089808

COSY 2-ROOM APARTMENT IN THE HISTORICAL "AFRIKA- HOUSE" OF 1911 NEXT TO LANDWEHRKANAL CLOSE TO POTSDAMER PLATZ





ID 5734

SIZE: ca. 41 SQM

Location: see map (approximate location)

NUMBER OF ROOMS: 2 (bedrooms: 1, living rooms: 1)

MAXIMUM BEDS: 3 (sofa bed 90x200, double bed 180x220)

BATHROOMS: 1 (1x with shower)

PUBLIC TRANSPORT: bus 106, M29, M48, U1, U2, U3

OCCUPATION: min. 3 months

DEPOSIT: 2.000 EUR

ADDITIONAL COSTS: final cleaning, + 7% VAT for rental under 6 months + 1 day

LOCATION

The apartment is situated near Potsdamer Platz and Tiergarten next to the Landwehrkanal in the historic building "Africa-House", built in 1911. Good public transportation possibilities nearby. At the famous Potsdamer Platz there are a lot of restaurants, bars, cafes, galleries, cinemas and shopping locations which invite to relax and enjoy free time.

DETAILS

balcony furniture, bed linen and towels, cable connection, cared, ceramic hob, coffee maker, combined washer & dryer, comfortable, dishwasher, flagstones, internet, modern-en, no pets, non-smoking, old building character, open floor plan, open kitchen, parquet, toaster, TV, Wi-Fi

INTERIOR

redeveloped building

MITTE

ca. 41 SQM

2 R

Currently not available

1.350€ / M
