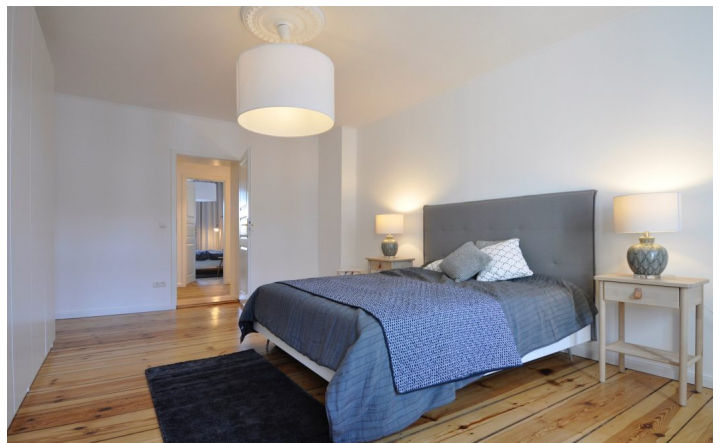




HOME TO HOME
WOHNEN AUF ZEIT

Geschäftsführerin und Inhaberin: Eva-Jannetie Gerlach
Motzstraße 58, 10777 Berlin, Deutschland
+49 30 2191 2323, office@hometohome.de, hometohome.de
Deutsche Bank, IBAN: DE11 1007 0024 0562 0901 00, BIC: DEUTDE33HAN
USt-Id.Nr.: DE 230089808

EXCLUSIVE 3-ROOM APARTMENT LOCATED IN KREUZBERG - INSPIRED BY HIIH





ID 5733

SIZE: ca. 80 SQM

Location: see map (approximate location)

NUMBER OF ROOMS: 3 (bedrooms: 2, living room: 1)

MAXIMUM BEDS: 4 (2 Doppelbetten)

BATHROOMS: 1 (1x mit Badewanne und Dusche)

PUBLIC TRANSPORT: U-Bahn

OCCUPATION: min. 3 Monate, max. nach Vereinbarung

DEPOSIT: 2 Monatsmieten

ADDITIONAL COSTS: Endreinigung

LOCATION

The apartment is located in a quiet residential street in the famous Bergmann-Kiez, Kreuzberg. It is a lively neighborhood with a lot of cafes, restaurants, and grocery stores nearby. The apartment is located between the underground station Gneisenaustraße and Platz der Luftbrücke.

DETAILS

Balcony, balcony furniture, bed linen and towels, bright, cable connection, ceramic hob, coffee maker, combined washer & dryer, comfortable, designer furniture, dishwasher, electric kettle, flagstones, flatscreen TV, parquet, quality fitted kitchen, toaster, well maintained, Wi-Fi

INTERIOR

front building, redeveloped building

KREUZBERG

ca. 80 SQM

3 R

Currently not available

2.400€ / M
