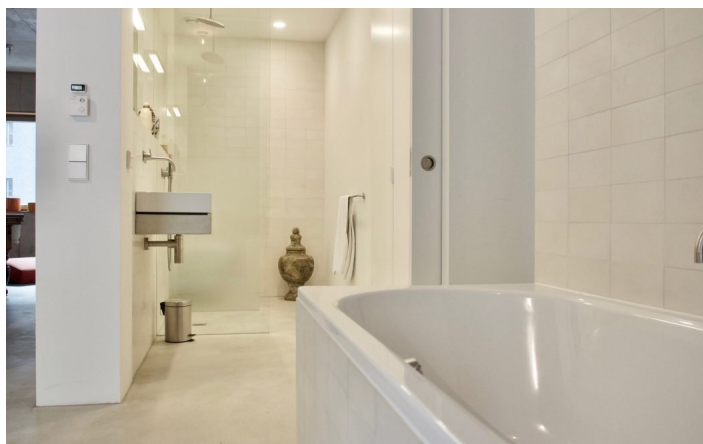




HOME TO HOME
WOHNEN AUF ZEIT

Geschäftsführerin und Inhaberin: Eva-Jannetie Gerlach
Motzstraße 58, 10777 Berlin, Deutschland
+49 30 2191 2323, office@hometohome.de, hometohome.de
Deutsche Bank, IBAN: DE11 1007 0024 0562 0901 00, BIC: DEUTDE33HAN
USt-Id.Nr.: DE 230089808

EXTRAORDINARY LOFT WITH BALCONY





ID 5186

SIZE: ca. 112 SQM

Location: see map (approximate location)

NUMBER OF ROOMS: 3 (bedrooms: 2, living rooms: 1)

MAXIMUM BEDS: 4 (double bed 160x200, bed 140x200)

BATHROOMS: 2 (1x with shower, 1x with bathtub and shower, 1 guest restroom)

PUBLIC TRANSPORT: Tram, U8

OCCUPATION: free from November 01, 2019, min. 3 months

DEPOSIT: 2 monthly rents

ADDITIONAL COSTS: parking place 80,- €, final cleaning

LOCATION

The Linienstrasse is a parallel street of Torstrasse and is located in the middle of Berlin. The U-Bahn station Rosa-Luxemburg-Platz is within walking distance. With the U2 it is just one station till Alexanderplatz. In the surrounding of the apartment there are restaurants, cafés and shopping facilities. The residential area offers as well a wider range of cultural activities: the Volksbühne is just 5 minutes away.

DETAILS

bed linen and towels, digital receiver, dishwasher, dvd player, electric kettle, flatscreen TV, hi-fi system, induction cooker, minimalist interior design, modern-en, no pets, non-smoking, open floor plan, open kitchen, polished concrete floor, sophisticated, washing machine, well maintained, Wi-Fi

INTERIOR

central heating, energy certificate available, front building, new building

MITTE

ca. 112 SQM

3 R

Currently not available

3.480€ / M
