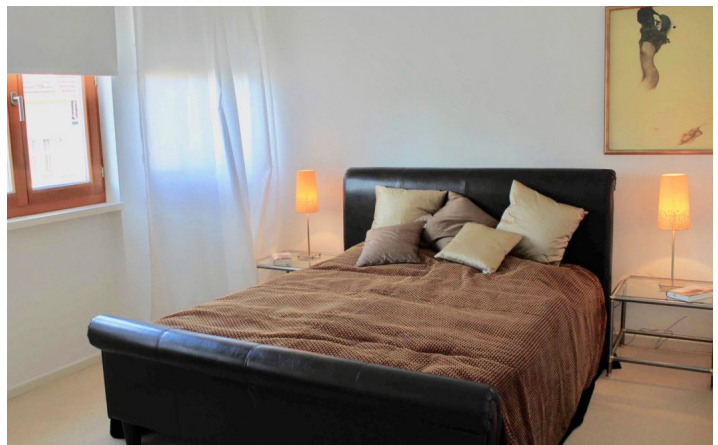


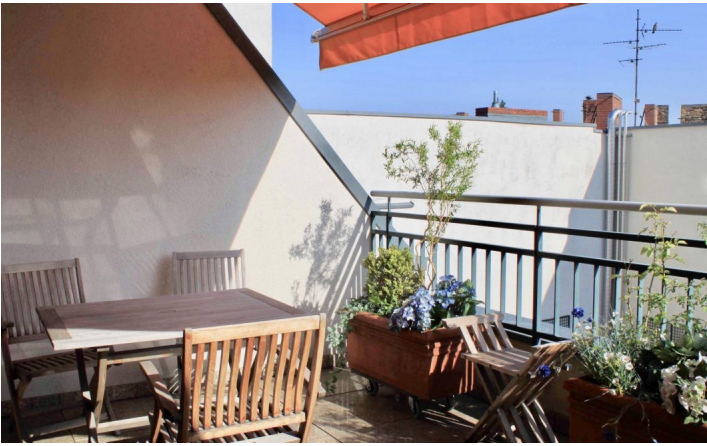


HOME TO HOME
WOHNEN AUF ZEIT

Geschäftsführerin und Inhaberin: Eva-Jannetie Gerlach
Motzstraße 58, 10777 Berlin, Deutschland
+49 30 2191 2323, office@hometohome.de, hometohome.de
Deutsche Bank, IBAN: DE11 1007 0024 0562 0901 00, BIC: DEUTDE33HAN
USt-Id.Nr.: DE 230089808

FANTASTIC MAISONETTE WITH SOUTH FACING TERRACE





ID 5119

SIZE: ca. 120 SQM

Location: see map (approximate location)

NUMBER OF ROOMS: 3 (bedrooms: 1, living rooms: 1, Arbeits-/Gästezimmer: 1)

MAXIMUM BEDS: 4 (double bed, sofa bed)

BATHROOMS: 2 (1x with shower, 1x with bathtub)

PUBLIC TRANSPORT: U4

OCCUPATION: min. 3 months

DEPOSIT: 2 monthly rents

ADDITIONAL COSTS: final cleaning

LOCATION

The exclusive 3-room maisonette apartment is located in pretty Schöneberg, in a side street of the beautiful Viktoria-Luise-Platz. In just a few minutes you can reach the Tauentzienstraße, which leads to the famous Kurfürstendamm with its exclusive shops. But also in the neighborhood are numerous small, welcoming shops as well as bars and restaurants. The Winterfeldtplatz with its famous weekly market is also within walking distance. The cozy apartment is tastefully and lovingly furnished. The large window fronts provide a lot of brightness. A modern kitchen, the bathrooms with pretty details and occasional antiques complete the cozy living atmosphere. Also, the maisonette has a great balcony with southern sun. Convince yourself and experience Berlin from its most beautiful side!

DETAILS

bed linen and towels, ceramic hob, clothes dryer, dishwasher, eat in kitchen, fitted kitchen, hi-fi system, no pets, non-smoking, parquet, sophisticated, TV, video intercom system, washing machine

INTERIOR

central heating, front building, new building

SCHÖNEBERG

ca. 120 SQM

3 R

Currently not available

2.640€ / M
