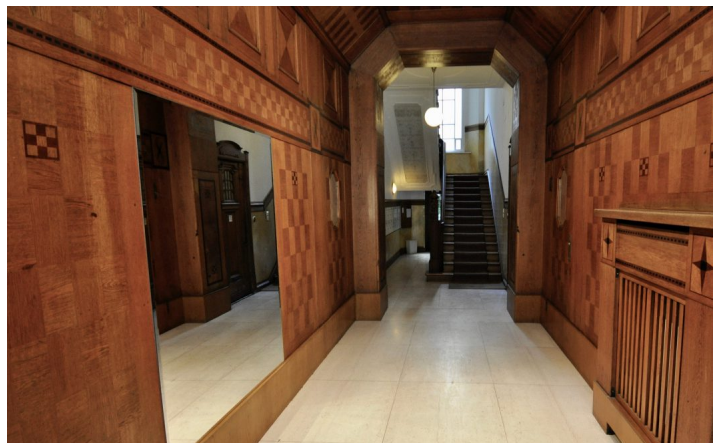




HOME TO HOME
WOHNEN AUF ZEIT

Geschäftsführerin und Inhaberin: Eva-Jannetie Gerlach
Motzstraße 58, 10777 Berlin, Deutschland
+49 30 2191 2323, office@hometohome.de, hometohome.de
Deutsche Bank, IBAN: DE11 1007 0024 0562 0901 00, BIC: DEUTDE33HAN
USt-Id.Nr.: DE 230089808

DROYSENSTRASSE IMPRESSIVE APARTMENT ONLY 5 MINUTES AWAY FROM KUDAMM





ID 5022

SIZE: ca. 195 SQM

Location: see map (approximate location)

NUMBER OF ROOMS: 5 (bedrooms: 2, living rooms: 1, dining rooms: 1, workrooms: 1)

MAXIMUM BEDS: 4 (2 double beds 180x200)

BATHROOMS: 2 (1x with shower, 1x with bathtub, 1 guest restroom)

PUBLIC TRANSPORT: S46, S5, S7, S75, U7

OCCUPATION: min. 3 months

DEPOSIT: 2 monthly rents

ADDITIONAL COSTS: additional costs, final cleaning

LOCATION

Quiet living area close to the Stuttgarter Platz which is famous for its restaurants and cafes. The Kurfürstendamm is within walking distance and offers lots of exclusiv shopping facilities. Good transport connection by subway, railway and bus. Airport Tegel, Hauptbahnhof and Friedrichstrasse are reachable within 20 minutes by bus oder railway.

DETAILS

bed linen and towels, cable connection, ceramic hob, coffee maker, comfortable, dishwasher, dvd player, electric kettle, exclusive furnishing style, fitted kitchen, flatscreen TV, generous, hi-fi system, no pets, non-smoking, old building character , parquet, sophisticated, toaster, washing machine, well maintained, Wi-Fi

INTERIOR

central heating, energy certificate available, front building, old building

CHARLOTTENBURG

ca. 195 SQM

5 R

Currently not available

4.000€ / M
