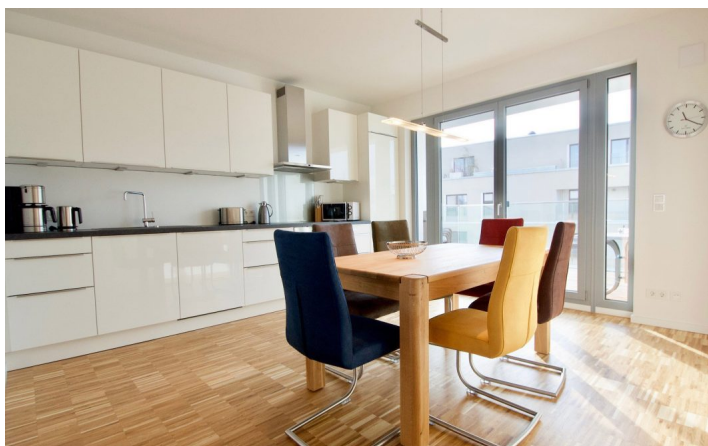




HOME TO HOME
WOHNEN AUF ZEIT

Geschäftsführerin und Inhaberin: Eva-Jannetie Gerlach
Motzstraße 58, 10777 Berlin, Deutschland
+49 30 2191 2323, office@hometohome.de, hometohome.de
Deutsche Bank, IBAN: DE11 1007 0024 0562 0901 00, BIC: DEUTDE33HAN
USt-Id.Nr.: DE 230089808

ADORABLE APARTMENT WITH FLOOR-TO-CEILING WINDOWS NEAR TO GLEISDREIECK PARK





ID 5608

SIZE: ca. 100 SQM

Location: see map (approximate location)

NUMBER OF ROOMS: 3 (bedrooms: 2, living rooms: 1, Arbeits-/Gästezimmer: 1)

MAXIMUM BEDS: 4 (2 double beds)

BATHROOMS: 1 (1x with bathtub and shower, 1 guest restroom)

PUBLIC TRANSPORT: bus, U1, U2

OCCUPATION: min. 3 months

DEPOSIT: 2 monthly rents

ADDITIONAL COSTS: final cleaning / Garage place 100 EUR / Month

LOCATION

The apartment is located in a quiet side street near to Landwehrkanal directly at the Park am Gleisdreieck. In just a few minutes you can reach the Potsdamer Platz where you can find lots of different shopping facilities, cinemas, the film museum as well as restaurants, cafés and bars for every taste. Good connection to public transports.

DETAILS

bed linen and towels, cable connection, ceramic hob, clothes dryer, comfortable, digital receiver, dishwasher, electric kettle, exclusive furnishing style, flatscreen TV, french windows, hi-fi system, microwave, modern-en, no pets, non-smoking, parquet, sophisticated, sunny, toaster, washing machine, well maintained, Wi-Fi, with a view into the green

INTERIOR

MITTE

ca. 100 SQM

3 R

Currently not available

2.690€ / M
