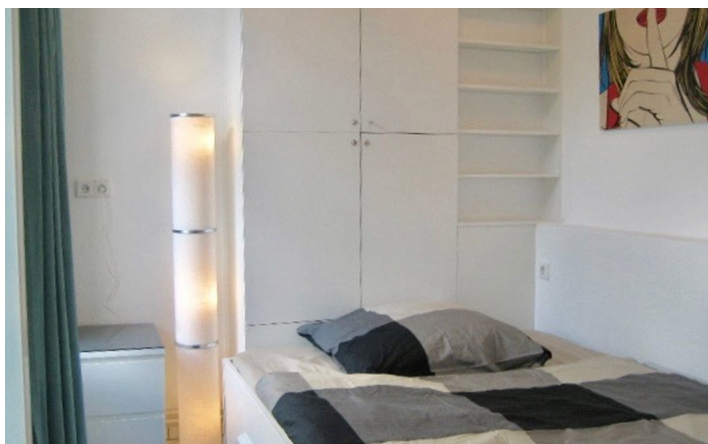
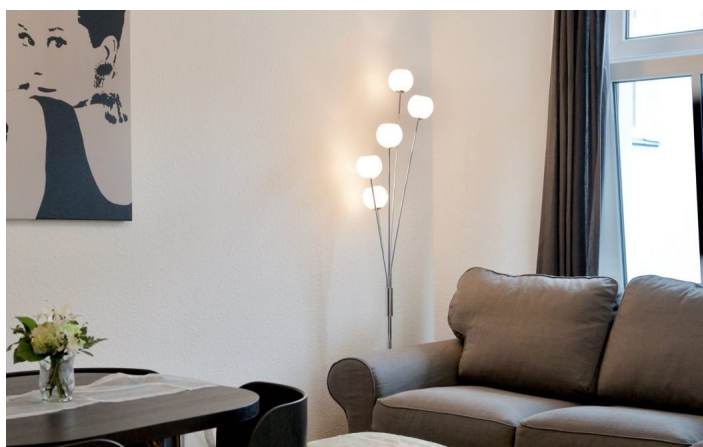




HOME TO HOME
WOHNEN AUF ZEIT

Geschäftsführerin und Inhaberin: Eva-Jannetie Gerlach
Motzstraße 58, 10777 Berlin, Deutschland
+49 30 2191 2323, office@hometohome.de, hometohome.de
Deutsche Bank, IBAN: DE11 1007 0024 0562 0901 00, BIC: DEUTDE33HAN
USt-Id.Nr.: DE 230089808

MODERN STUDIO APARTMENT IN LIVELY NEIGHBORHOOD





ID 5171

SIZE: ca. 35 SQM

Location: see map (approximate location)

NUMBER OF ROOMS: 1.5 (bedrooms: 1, living rooms: 1)

MAXIMUM BEDS: 4 (sofa bed, double bed)

BATHROOMS: 1 (1x with shower)

OCCUPATION: min. 6 months, max. 24 months

DEPOSIT: 2 monthly rents

ADDITIONAL COSTS: 30,- € monthly cleaning, final cleaning

LOCATION

In great location but still quiet neighborhood with easy access to the public transport. The Kastanienallee and the Kulturbrauerei offer varied nightlife bars and restaurants and can be reached in 5 minutes by foot. Shopping possibilities are also around.

DETAILS

bed linen and towels, bright, cable connection, coffee maker, combined washer & dryer, cosy atmosphere to live in, electric kettle, fitted kitchen, microwave, modern-en, no pets, non-smoking, sophisticated, toaster, TV, Wi-Fi, wooden flooring

INTERIOR

energy certificate available, old building, storey heating

PRENZLAUER BERG

ca. 35 SQM

1.5 R

Currently not available

900€ / M
