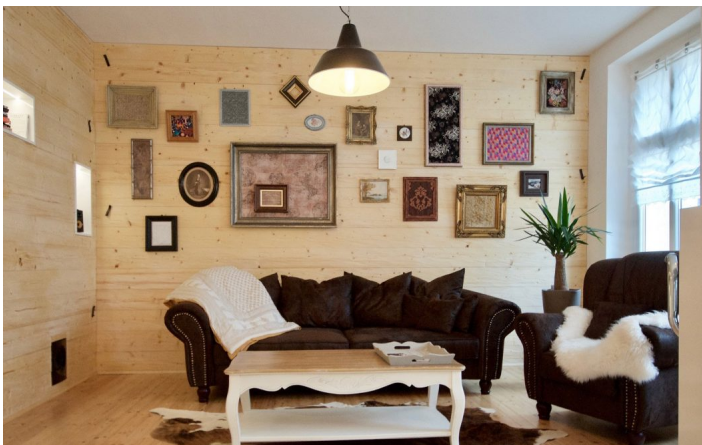




HOME TO HOME
WOHNEN AUF ZEIT

Geschäftsführerin und Inhaberin: Eva-Jannetie Gerlach
Motzstraße 58, 10777 Berlin, Deutschland
+49 30 2191 2323, office@hometohome.de, hometohome.de
Deutsche Bank, IBAN: DE11 1007 0024 0562 0901 00, BIC: DEUTDE33HAN
USt-Id.Nr.: DE 230089808

QUIET AND INDIVIDUALLY FURNISHED 2-ROOM-APARTMENT



ID 5547

SIZE: ca. 48 SQM

Location: see map (approximate location)

NUMBER OF ROOMS: 2 (bedrooms: 1, living rooms: 1)

MAXIMUM BEDS: 2 (double bed 160x200)

BATHROOMS: 1 (1x with bathtub)

PUBLIC TRANSPORT: bus, S1, S2, S41, S42, S46, S8, S85, S9, Tram

OCCUPATION: min. 3 months

DEPOSIT: 2 monthly rents

ADDITIONAL COSTS: internet and television € 60,-, final cleaning

LOCATION

Great location in Prenzlauer Berg. Good traffic connection due to the vicinity to S-Bahnhof Schönhauser Allee. The Mauerpark is just 15 minutes on foot away and invites to go for a walk and to relax. In the amphitheatre there is karaoke in summer. Shopping facilities for the daily requirements are as well within walking distance.

DETAILS

bed linen and towels, BlueRay player, bright, cable connection, ceramic hob, coffee maker, combined washer & dryer, comfortable, cosy atmosphere to live in, digitalreceiver, dishwasher, electric kettle, electric stove, flatscreen 3D TV, hi-fi system, individual furnishing style, microwave, no pets, non-smoking, toaster, Wi-Fi, wooden flooring

INTERIOR

central heating, energy certificate available, old building, wing

PRENZLAUER BERG

ca. 48 SQM

2 R

Currently not available

1.250€ / M
