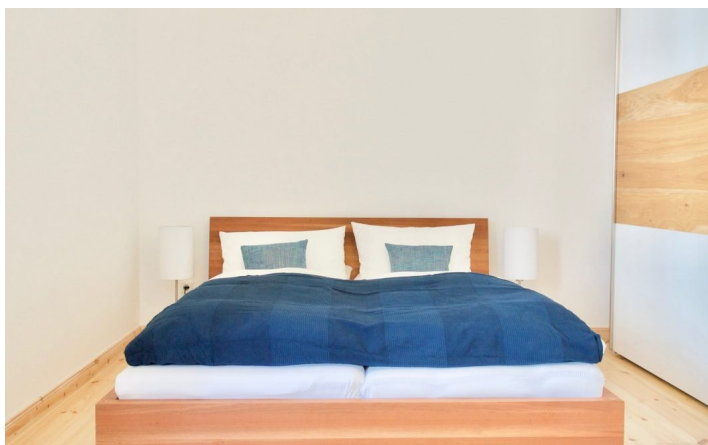
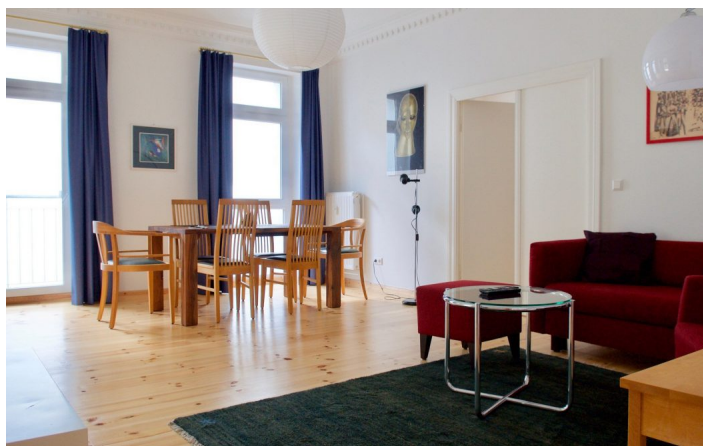


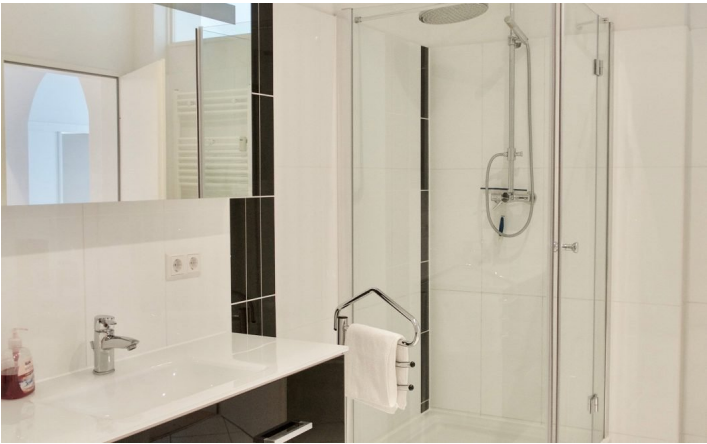


HOME TO HOME
WOHNEN AUF ZEIT

Geschäftsführerin und Inhaberin: Eva-Jannetie Gerlach
Motzstraße 58, 10777 Berlin, Deutschland
+49 30 2191 2323, office@hometohome.de, hometohome.de
Deutsche Bank, IBAN: DE11 1007 0024 0562 0901 00, BIC: DEUTDE33HAN
USt-Id.Nr.: DE 230089808

REPRESENTATIVE THREE ROOM APARTMENT IN A BEAUTIFUL REORGANIZED OLD BUILDING





ID 5316

SIZE: ca. 94 SQM

Location: see map (approximate location)

NUMBER OF ROOMS: 3 (bedrooms: 2, living rooms: 1)

MAXIMUM BEDS: 4 (2 double beds)

BATHROOMS: 1 (1x with bathtub and shower)

PUBLIC TRANSPORT: bus, U2, U7

OCCUPATION: min. 3 months

DEPOSIT: 2 monthly rents

ADDITIONAL COSTS: final cleaning

LOCATION

The apartment is located in a side street of the pedestrian area Wilmersdorfer Strasse, with many shopping possibilities. The underground no 7 and 9 is in 3 minutes walking distance, or the bus to airport Tegel. The beautiful Schloss Charlottenburg is just some bus stations away, too.

DETAILS

bed linen and towels, BlueRay player, cared, coffee maker, combined washer & dryer, comfortable, cosy atmosphere to live in, digital music system for Apple-products, dishwasher, fitted kitchen, flatscreen TV, freezer, generous, no pets, non-smoking, parquet, radio, sunny, washing machine, Wi-Fi

INTERIOR

central heating, energy certificate available, garden house, old building

CHARLOTTENBURG

ca. 94 SQM

3 R

Currently not available

2.200€ / M
