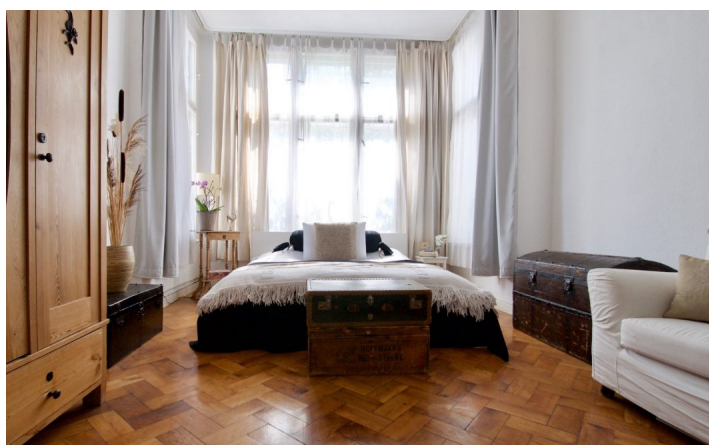




**HOME TO HOME**  
**WOHNEN AUF ZEIT**

Geschäftsführerin und Inhaberin: Eva-Jannetie Gerlach  
Motzstraße 58, 10777 Berlin, Deutschland  
+49 30 2191 2323, office@hometohome.de, hometohome.de  
Deutsche Bank, IBAN: DE11 1007 0024 0562 0901 00, BIC: DEUTDE33HAN  
USt-Id.Nr.: DE 230089808

## SPACIOUS 2-ROOM-APARTMENT WITH CHARMING EQUIPMENT





---

# ID 5144

---

SIZE: ca. 80 SQM

---

Location: see map (approximate location)

---

NUMBER OF ROOMS: 2 (bedrooms: 1, living rooms: 1)

---

MAXIMUM BEDS: 3 (sofa bed 120x200, double bed 180x200)

---

BATHROOMS: 1 (1x with bathtub)

---

PUBLIC TRANSPORT: S1, S2, S25, U6, U8

---

OCCUPATION: free from February 01, 2019, min. 3 months

---

DEPOSIT: 2 monthly rents

---

ADDITIONAL COSTS: final cleaning

---

## LOCATION

Popular and vivid residential area directly at Torstrasse. In the surrounding of the apartment there are numerous restaurants, cafés, small galleries and bars. Shopping facilities for the daily needs are as well within walking distance. The Rosenthaler Platz is only a 5 minutes walk away. Good traffic connections.

## DETAILS

bed linen and towels, cable connection, ceramic hob, clothes dryer, coffee maker, digitalreceiver, dishwasher, dvd player, eat in kitchen, electric kettle, fitted kitchen, flatscreen TV, hi-fi system, individual furnishing style, modern-en, no pets, non-smoking, old building character, parquet, representative, Sat-TV, stucco, toaster, washing machine, well maintained, Wi-Fi

## INTERIOR

energy certificate available, front building, redeveloped building, single-story heating (gas)

---

### MITTE

ca. 80 SQM

2 R

Currently not available

1.875€ / M

---