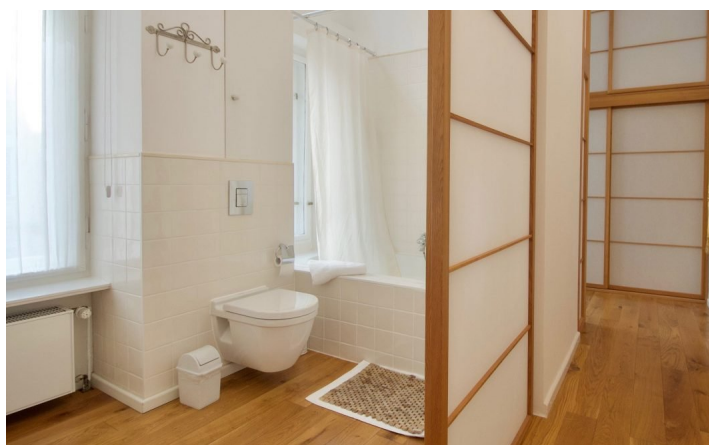
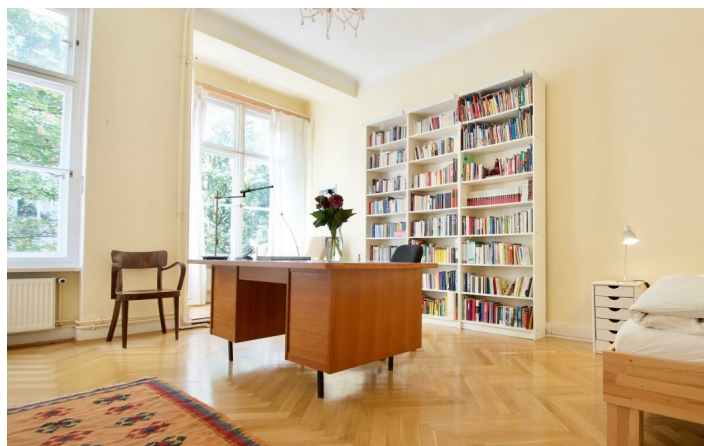




HOME TO HOME
WOHNEN AUF ZEIT

Geschäftsführerin und Inhaberin: Eva-Jannetie Gerlach
Motzstraße 58, 10777 Berlin, Deutschland
+49 30 2191 2323, office@hometohome.de, hometohome.de
Deutsche Bank, IBAN: DE11 1007 0024 0562 0901 00, BIC: DEUTDE33HAN
USt-Id.Nr.: DE 230089808

SPACIOUS APARTMENT IN AN OLD BUILDING IN A GREAT AREA WITH SUNNY BALCONY





ID 5664

SIZE: ca. 136 SQM

Location: see map (approximate location)

NUMBER OF ROOMS: 3 (Schlafzimmer: 1, Wohnzimmer: 1, Arbeitszimmer: 1)

MAXIMUM BEDS: 4 (Einzelbett, Schlafcouch 140x200, Doppelbett 200x200)

BATHROOMS: 1 (1x mit Badewanne)

PUBLIC TRANSPORT: bus, U1, U3, U9

OCCUPATION: min. 3 months, max. 6 months

DEPOSIT: 2 monthly rents

ADDITIONAL COSTS: Reinigungsservice alle 14 Tage, Endreinigung

LOCATION

The apartment is located in a quiet residential street in the middle of the city. The Kurfürstendamm is by foot only a few minutes away. So there are not only shopping facilities for the daily needs but also restaurants and other shops in the immediate vicinity. Good connection to public transports. The famous KaDeWe is as well within walking distance.

DETAILS

bed linen and towels, cable connection, cared, coffee maker, comfortable, cosy atmosphere to live in, dishwasher, dvd player, eat in kitchen, electric kettle, flatscreen TV, hi-fi system, induction cooker, no pets, non-smoking, old building character, parquet, toaster, washing machine, Wi-Fi

INTERIOR

central heating, energy certificate available, front building, old building

WILMERSDORF

ca. 136 SQM

3 R

Currently not available

2.380€ / M
