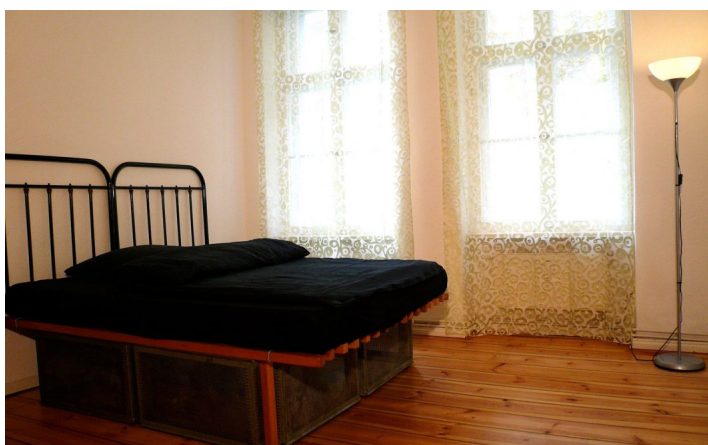
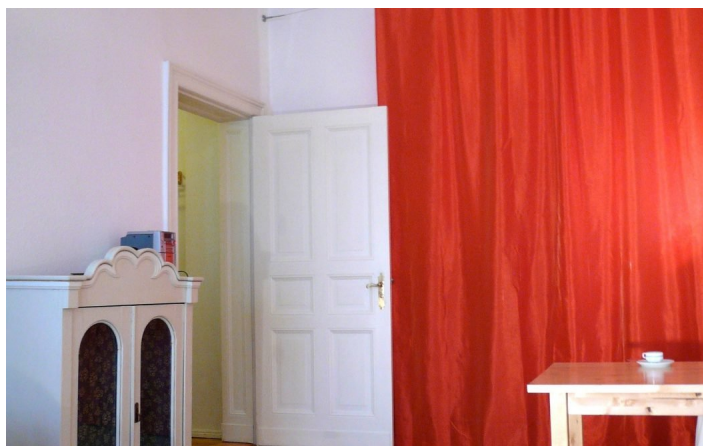




HOME TO HOME
WOHNEN AUF ZEIT

Geschäftsführerin und Inhaberin: Eva-Jannetie Gerlach
Motzstraße 58, 10777 Berlin, Deutschland
+49 30 2191 2323, office@hometohome.de, hometohome.de
Deutsche Bank, IBAN: DE11 1007 0024 0562 0901 00, BIC: DEUTDE33HAN
USt-Id.Nr.: DE 230089808

STYLISH OLD BUILDING APARTMENT IN A QUIET AND CENTRAL LOCATION



ID 2055

SIZE: ca. 62 SQM

Location: see map (approximate location)

NUMBER OF ROOMS: 2 (bedrooms: 1, living rooms: 1)

MAXIMUM BEDS: 3 (double bed, sofa bed)

BATHROOMS: 1 (1x with bathtub)

PUBLIC TRANSPORT: U7

OCCUPATION: min. 3 months

DEPOSIT: 2 monthly rents

ADDITIONAL COSTS: 50,00 € for telephone and internet, final cleaning

LOCATION

Idyllic location in the middle of Schöneberg. The Winterfeldtplatz is reachable within 10 minutes by foot. Berlins biggest vegetable market takes place there every wednesday and saturday. In the area are many traditional pubs and multicultural restaurants.

DETAILS

bed linen and towels, bright, cable connection, cared, comfortable, dishwasher, dvd player, fitted kitchen, flatscreen TV, hi-fi system, microwave, no pets, non-smoking, selected antique furnitures, telephone, washing machine, Wi-Fi, wooden flooring

INTERIOR

central heating, old building, wing

SCHÖNEBERG

ca. 62 SQM

2 R

Currently not available

1.020€ / M
