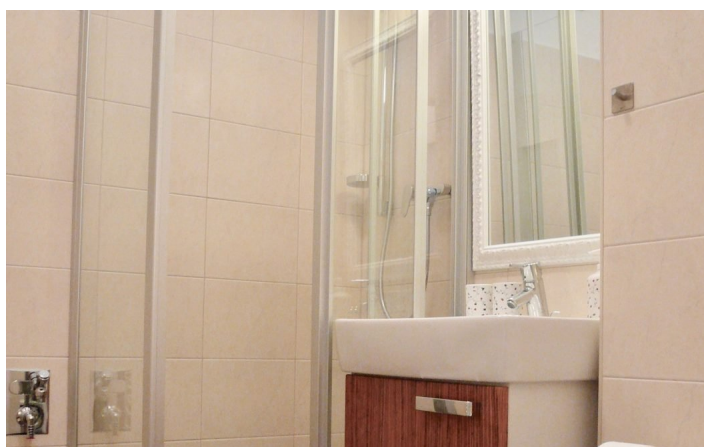
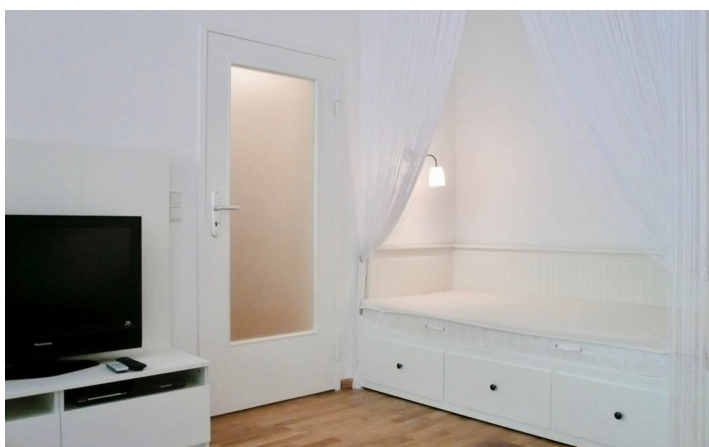
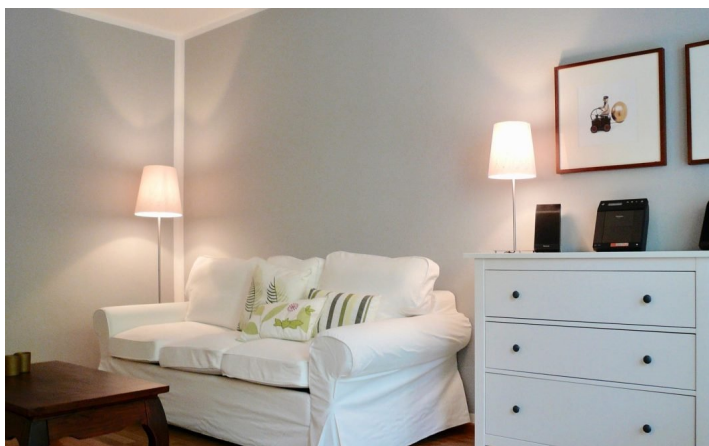


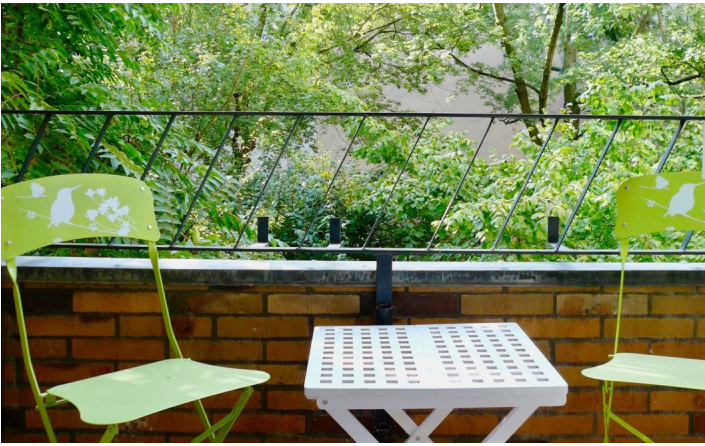


HOME TO HOME
WOHNEN AUF ZEIT

Geschäftsführerin und Inhaberin: Eva-Jannetie Gerlach
Motzstraße 58, 10777 Berlin, Deutschland
+49 30 2191 2323, office@hometohome.de, hometohome.de
Deutsche Bank, IBAN: DE11 1007 0024 0562 0901 00, BIC: DEUTDE33HAN
USt-Id.Nr.: DE 230089808

STYLISHLY FURNISHED APARTMENT NEAR WITTENBERGPLATZ





ID 2152

SIZE: ca. 35 SQM

Location: see map (approximate location)

NUMBER OF ROOMS: 1 room

MAXIMUM BEDS: 2 (single bed)

BATHROOMS: 1 (1x with shower)

PUBLIC TRANSPORT: bus, U1, U2, U3, U4

OCCUPATION: min. 3 months

DEPOSIT: 2 monthly rents

ADDITIONAL COSTS: final cleaning

LOCATION

Centrally located in the west of Berlin. The Wittenbergplatz can be reached within a few minutes. Here you can find the KaDeWe and the Kurfürstendamm, which offers lots of shopping facilities and restaurants. A good connection to the public transport is given bei various buses and underground railroad lines.

DETAILS

bed linen and towels, cable connection, combined washer & dryer, dishwasher, dvd player, fitted kitchen, flatscreen TV, hi-fi system, laminate, modern-en, no pets, non-smoking, open kitchen, Wi-Fi

INTERIOR

central heating, energy certificate available, new building

SCHÖNEBERG

ca. 35 SQM

1 R

Currently not available

950€ / M
