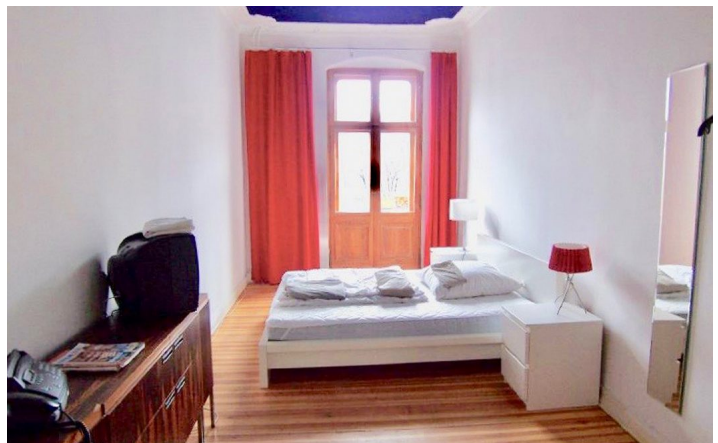




**HOME TO HOME**  
**WOHNEN AUF ZEIT**

Geschäftsführerin und Inhaberin: Eva-Jannetie Gerlach  
Motzstraße 58, 10777 Berlin, Deutschland  
+49 30 2191 2323, office@hometohome.de, hometohome.de  
Deutsche Bank, IBAN: DE11 1007 0024 0562 0901 00, BIC: DEUTDE33HAN  
USt-Id.Nr.: DE 230089808

## STYLISHLY FURNISHED STUCCO OLD BUILDING FLAT AT THE SAVIGNYPLATZ





---

## ID 5023

---

SIZE: ca. 75 SQM

---

Location: see map (approximate location)

---

NUMBER OF ROOMS: 2 (bedrooms: 1, living rooms: 1)

---

MAXIMUM BEDS: 2 (double bed)

---

BATHROOMS: 1 (1x with bathtub)

---

PUBLIC TRANSPORT: bus, S46, S5, S7, S75

---

OCCUPATION: min. 3 months

---

DEPOSIT: 2 monthly rents

---

ADDITIONAL COSTS: final cleaning

---

## LOCATION

The apartment is very centrally located directly at the popular Savignyplatz. In the area there are numerous cafes and restaurants. Even small boutiques are within walking distance. With the S-Bahn you can reach the Hauptbahnhof and the Friedrichstrasse. The Kurfürstendamm, known for its shopping variety, can be reached in 15 minutes by foot.

## DETAILS

bed linen and towels, cable connection, comfortable, designer furniture, dishwasher, eat in kitchen, hi-fi system, modern-en , no pets, non-smoking, old building character, selected antique furnitures, stucco, telephone, telephone flatrate (for German domestic conversations), TV, washing machine, Wi-Fi, wooden flooring

## INTERIOR

central heating, old building, wing

---

## CHARLOTTENBURG

ca. 75 SQM

2 R

Currently not available

1.530€ / M

---