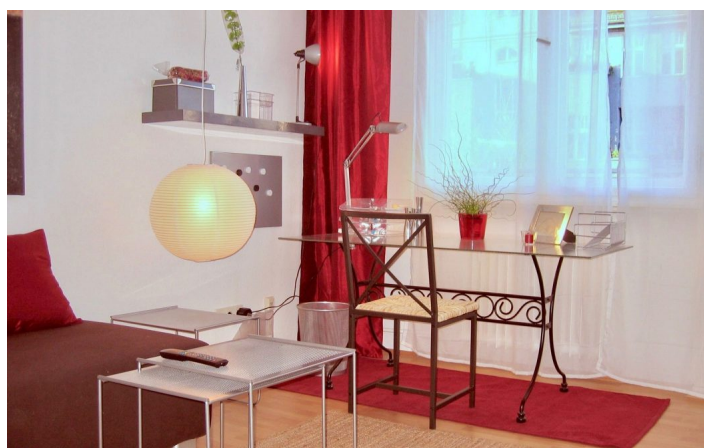
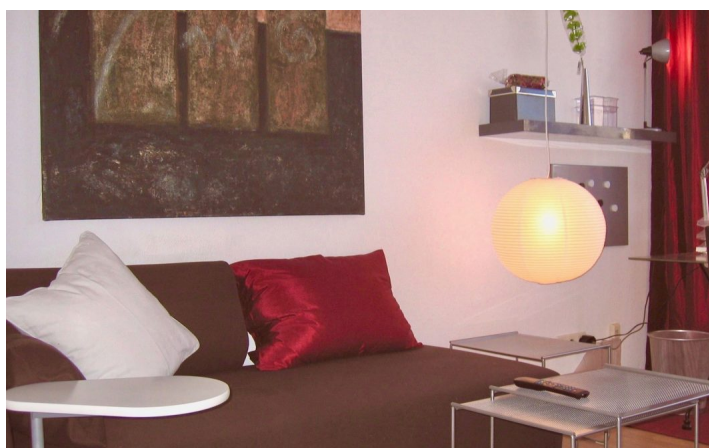




**HOME TO HOME**  
**WOHNEN AUF ZEIT**

Geschäftsführerin und Inhaberin: Eva-Jannetie Gerlach  
Motzstraße 58, 10777 Berlin, Deutschland  
+49 30 2191 2323, office@hometohome.de, hometohome.de  
Deutsche Bank, IBAN: DE11 1007 0024 0562 0901 00, BIC: DEUTDE33HAN  
USt-Id.Nr.: DE 230089808

## TASTEFUL FURNISHED APARTMENT IN THE BAVARIAN QUARTER





---

# ID 1139

---

SIZE: ca. 45 SQM

---

Location: see map (approximate location)

---

NUMBER OF ROOMS: 2 (bedrooms: 1, living rooms: 1)

---

MAXIMUM BEDS: 2 (bed 140x200)

---

BATHROOMS: 1 (1x with bathtub)

---

PUBLIC TRANSPORT: U4, U7

---

OCCUPATION: min. 6 months

---

DEPOSIT: 2 monthly rents

---

ADDITIONAL COSTS: final cleaning, electricity, heating

---

## LOCATION

Quiet side street near Bayerischer Platz, in the immediate vicinity of many shopping facilities, restaurants and cafés. The close Volkspark Schöneberg-Wilmersdorf is perfect for stress relief and a nice playground for children. Very good traffic connection due to vicinity to the underground Bayerischer Platz.

## DETAILS

bed linen and towels, cable connection, dvd player, eat in kitchen, flatscreen TV, hi-fi system, laminate, modern-en, no pets, non-smoking, washing machine

## INTERIOR

central heating, front building, new building

---

## SCHÖNEBERG

ca. 45 SQM

2 R

Currently not available

820€ / M

---