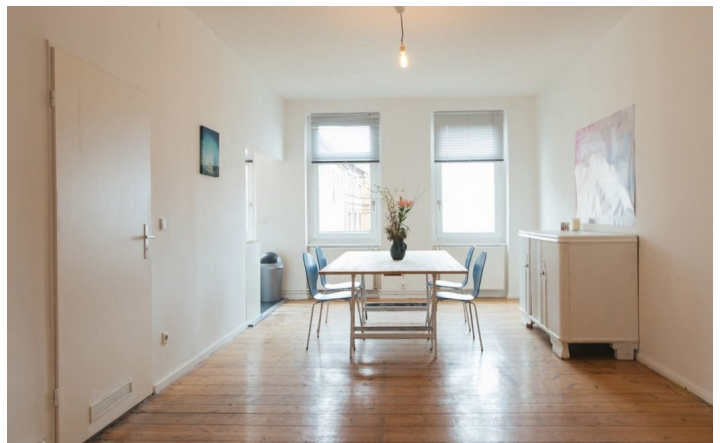




HOME TO HOME
WOHNEN AUF ZEIT

Geschäftsführerin und Inhaberin: Eva-Jannetie Gerlach
Motzstraße 58, 10777 Berlin, Deutschland
+49 30 2191 2323, office@hometohome.de, hometohome.de
Deutsche Bank, IBAN: DE11 1007 0024 0562 0901 00, BIC: DEUTDE33HAN
USt-Id.Nr.: DE 230089808

UNIQUE OLD BUILDING APARTMENT IN KREUZBERG NEAR GÖRLITZER PARK





ID 5625

SIZE: ca. 71 SQM

Location: see map (approximate location)

NUMBER OF ROOMS: 2 (Schlafzimmer: 1, Wohnzimmer: 1)

MAXIMUM BEDS: 4 (Doppelbett, Schlafcouch)

BATHROOMS: 1 (1x mit Badewanne)

PUBLIC TRANSPORT: bus, U1, U8

OCCUPATION: free from April 01, 2019, min. 3 months, max. according to agreement

DEPOSIT: 2 monthly rents

ADDITIONAL COSTS: Endreinigung

LOCATION

The apartment is located in a popular residential area in Kreuzberg between Paul-Lincke-Ufer and the Görlitzer Park. There are many small cafes, restaurants and special boutiques. Also shopping facilities for daily use are in the immediate vicinity. At the nearby canal, you can visit the Turkish market or flea markets. In just 10 minutes by foot you reach the U-Bahnstation Kottbusser Tor or U-Bahnstation Görlitzer Park.

DETAILS

bed linen and towels, bright, cable connection, ceramic hob, coffee maker, combined washer & dryer, cosy atmosphere to live in, dishwasher, electric kettle, electric stove, fitted kitchen, flatscreen TV, generous, modern-en, no pets, non-smoking, toaster, well maintained, Wi-Fi, wooden flooring

INTERIOR

central heating, energy certificate available, garden house, old building

KREUZBERG

ca. 71 SQM

2 R

free from 1.2.2024

1.750€ / M
