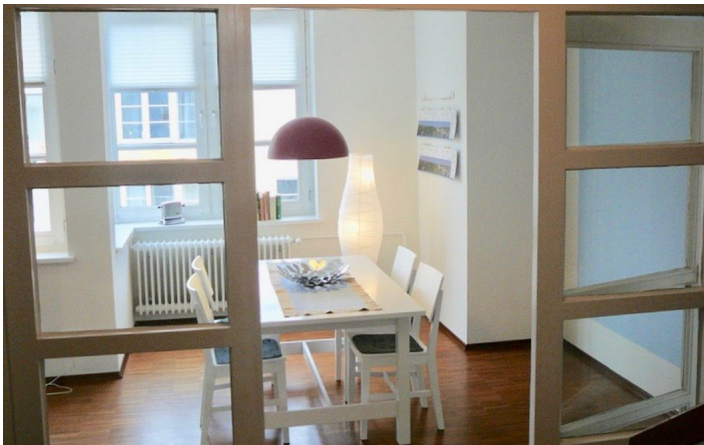




HOME TO HOME
WOHNEN AUF ZEIT

Geschäftsführerin und Inhaberin: Eva-Jannetie Gerlach
Motzstraße 58, 10777 Berlin, Deutschland
+49 30 2191 2323, office@hometohome.de, hometohome.de
Deutsche Bank, IBAN: DE11 1007 0024 0562 0901 00, BIC: DEUTDE33HAN
USt-Id.Nr.: DE 230089808

WONDERFUL APARTMENT IN A TOWNHOUSE





ID 5109

SIZE: ca. 78 SQM

Location: see map (approximate location)

NUMBER OF ROOMS: 2 (bedrooms: 1, living rooms: 1)

MAXIMUM BEDS: 2 (double bed)

BATHROOMS: 1 (1x with bathtub)

PUBLIC TRANSPORT: bus, U-Bahn

OCCUPATION: min. 3 months

DEPOSIT: 2 monthly rents

ADDITIONAL COSTS: final cleaning

LOCATION

The apartment is located in a quiet side street near to Landwehrkanal. In just a few minutes you can reach the Potsdamer Platz where you can find lots of different shopping facilities, cinemas, the film museum as well as restaurants, cafés and bars for every taste. Good connection to public transports.

DETAILS

bed linen and towels, cared, ceramic hob, combined washer & dryer, dishwasher, electric kettle, fitted kitchen, flatscreen TV, luxurious furnishing style, modern-en, no pets, non-smoking, parquet

INTERIOR

central heating, townhouse

TIERGARTEN

ca. 78 SQM

2 R

Currently not available

1.860€ / M
